

Introduction to FEM (II)

Kengo Nakajima
Information Technology Center

Technical & Scientific Computing I (4820-1027)
Seminar on Computer Science I (4810-1204)

- Numerical Method for PDE (Method of Weighted Residual)
- Gauss-Green's Theorem
- Numerical Method for PDE (Variational Method)

Approximation Method for PDE

Partial Differential Equations: 偏微分方程式

- Consider solving the following differential equation (boundary value problem), domain V , boundary S :

$$L(u) = f$$

- u (solution of the equation) can be approximated by function u_M (linear combination)

$$u_M = \sum_{i=1}^M a_i \Psi_i$$

Ψ_i Trial/Test Function (試行関数) (known function of position, defined in domain and at boundary. “Basis” in linear algebra.

a_i Coefficients (unknown)

Method of Weighted Residual

MWR: 重み付き残差法

- u_M is exact solution of u if R (residual : 残差) = 0:

$$R = L(u_M) - f$$

- In MWR, consider the condition where the following integration of R multiplied by w (weight/weighting function : 重み関数) over entire domain is 0

$$\int_V w R(u_M) dV = 0$$

- MWR provides “smoothed” approximate solution, which satisfies $R=0$ in the domain V

Variational Method (Ritz) (1/2)

変分法

- It is widely known that exact solution u provides extreme values (max/min) of “functional : 汎関数” $I(u)$
 - Euler equation: differential equation satisfied by u , if functional has extreme values (極値)
 - Euler equation is satisfied, if u provides extreme values of $I(u)$.
 - *provide extreme values* : 停留させる (or *stationarize*)
- For example, functional, which corresponds to governing equations of linear elasticity (principle of virtual work, equilibrium equations), is “principle of minimum potential energy (principle of minimum strain energy) (エネルギー最小, 歪みエネルギー最小) ”.

Variational Method (Ritz) (2/2)

变分法

- Substitute the following approx. solution into $I(u)$, and calculate coefficients a_i under the condition where $I_M = I(u_M)$ provides extreme values, then u_M is obtained:

$$u_M = \sum_{i=1}^M a_i \Psi_i$$

- Variational method is theoretical method, and can be only applied to differential equations, which has equivalent variational problem.
 - In this class, we mainly use MWR
 - Brief overview of Ritz method will given later today.

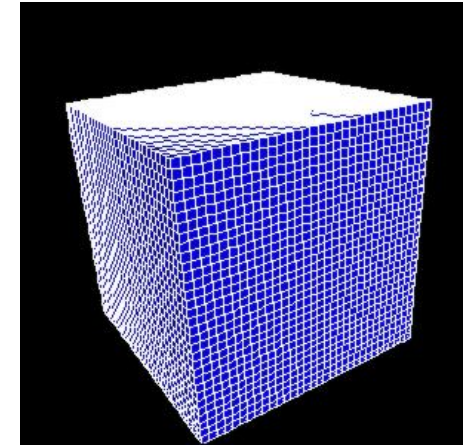
Finite Element Method (FEM)

有限要素法

- Entire region is discretized into fine elements (要素), and the following approximation is applied to each element:

$$u_M = \sum_{i=1}^M a_i \Psi_i$$

- MWR or Variational Method is applied to each element
- Each element matrix is accumulated to global matrix, and solution of obtained linear equations provides approx. solution of PDE.
- Details of FEM will be provided after next week



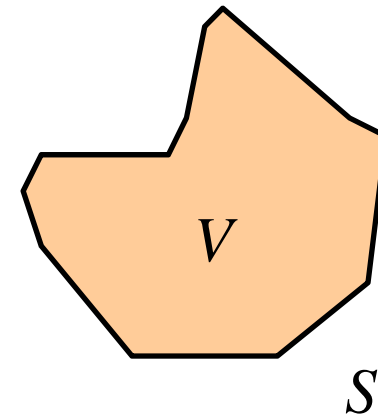
Example of MWR (1/3)

- Thermal Equation

$$\lambda \left(\frac{\partial^2 T}{\partial x^2} + \frac{\partial^2 T}{\partial y^2} \right) + Q = 0 \quad \text{in } V$$

λ : Conductivity, Q : Heat Gen./Volume

$T = 0$ at boundary S



- Approximate Solution

$$T = \sum_{j=1}^n a_j \Psi_j$$

- Residual

$$R(a_j, x, y) = \lambda \sum_{j=1}^n a_j \left(\frac{\partial^2 \Psi_j}{\partial x^2} + \frac{\partial^2 \Psi_j}{\partial y^2} \right) + Q$$

Example of MWR (2/3)

- Multiply weighting function w_i , and apply integration over V :

$$\int_V w_i R dV = 0$$

- If a set of weighting function w_i is a set of n different functions, the above integration provides a set of n linear equations:
 - # trial/test functions = # weighting functions

$$\sum_{j=1}^n a_j \int_V w_i \lambda \left(\frac{\partial^2 \Psi_j}{\partial x^2} + \frac{\partial^2 \Psi_j}{\partial y^2} \right) dV = - \int_V w_i Q dV \quad (i = 1, \dots, n)$$

Example of MWR (3/3)

- Matrix form of the equations is described as follows:

$$[B]\{a\} = \{Q\}$$

$$B_{ij} = \int_V w_i \lambda \left(\frac{\partial^2 \Psi_j}{\partial x^2} + \frac{\partial^2 \Psi_j}{\partial y^2} \right) dV, \quad Q_i = - \int_V w_i Q dV$$

Actual approach is slightly different from this
(more detailed discussions after next week)

Various types of MWR's

- Various types of weighting functions
- Collocation Method 選点法
- Least Square Method 最小自乗法
- Galerkin Method ガラーキン法

Collocation Method

- Weighting function: Dirac's Delta Function δ

$$\delta(z) = \infty \quad \text{if} \quad z = 0$$

$$\delta(z) = 0 \quad \text{if} \quad z \neq 0, \quad \int_{-\infty}^{+\infty} \delta(z) dz = 1$$

$$w_i = \delta(\mathbf{x} - \mathbf{x}_i) \quad \mathbf{x}: \text{location}$$

- In collocation method, R (residual) is set to 0 at n collocation points by feature of Dirac's Delta Fn. δ :

$$\int_V R \delta(\mathbf{x} - \mathbf{x}_i) dV = R|_{\mathbf{x}=\mathbf{x}_i}$$

- If n increases, R approaches to 0 over entire domain.

Least Square Method

- Weighting function:

$$w_i = \frac{\partial R}{\partial a_i}$$

- Minimize the following integration according to a_i (unknowns):

$$I(a_i) = \int_V [R(a_i, \mathbf{x})]^2 dV$$
$$\frac{\partial}{\partial a_i} [I(a_i)] = 2 \int_V \left[R(a_i, \mathbf{x}) \frac{\partial R(a_i, \mathbf{x})}{\partial a_i} \right] dV = 0$$



$$\int_V \left[R(a_i, \mathbf{x}) \frac{\partial R(a_i, \mathbf{x})}{\partial a_i} \right] dV = 0$$

Galerkin Method

- Weighting Function = Test/Trial Function:

$$w_i = \Psi_i$$

- Galerkin, Boris Grigorievich
 - 1871-1945
 - Engineer and Mathematician of Russia
 - He got a hint for Galerkin Method while he was imprisoned because of anti-czarism (1906-1907).



Example (1/2)

- Governing Equation

$$\frac{d^2 u}{dx^2} + u + x = 0 \quad (0 \leq x \leq 1)$$

- Boundary Conditions: Dirichlet

$$u = 0 @ x = 0$$

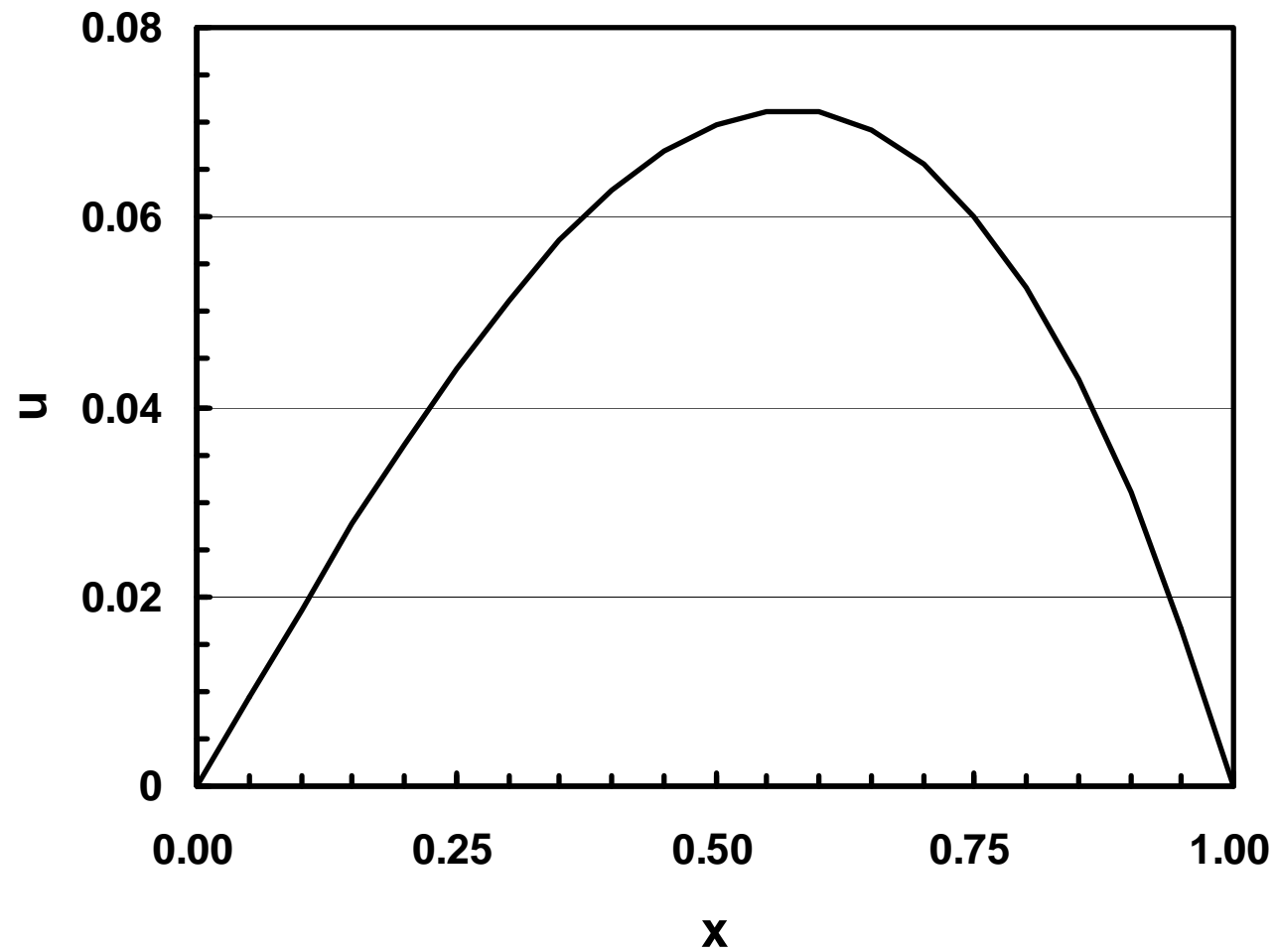
$$u = 0 @ x = 1$$

- Exact Solution

$$u = \frac{\sin x}{\sin 1} - x$$

Exact Solution

$$u = \frac{\sin x}{\sin 1} - x$$



Example (2/2)

- Assume the following approx. solution:

$$u = x(1-x)(a_1 + a_2x) = x(1-x)a_1 + x^2(1-x)a_2 = a_1\Psi_1 + a_2\Psi_2$$

$$\Psi_1 = x(1-x), \quad \Psi_2 = x^2(1-x)$$

Test/trial function satisfies $u=0@x=0,1$

- Residual is as follows:

$$R(a_1, a_2, x) = x + (-2 + x - x^2)a_1 + (2 - 6x + x^2 - x^3)a_2$$

- Let's apply various types of MWR to this equation
 - We have two unknowns (a_1, a_2), therefore we need two independent weighting functions.

Collocation Method

- $n=2$, $x=1/4$, $x=1/2$ for collocation points:

$$R(a_1, a_2, \frac{1}{4}) = 0, \quad R(a_1, a_2, \frac{1}{2}) = 0$$

$$R(a_1, a_2, x) = x + (-2 + x - x^2)a_1 + (2 - 6x + x^2 - x^3)a_2$$

- Solution:

$$\begin{bmatrix} 29/16 & -35/64 \\ 7/4 & 7/8 \end{bmatrix} \begin{Bmatrix} a_1 \\ a_2 \end{Bmatrix} = \begin{Bmatrix} 1/4 \\ 1/2 \end{Bmatrix} \quad \Rightarrow \quad a_1 = \frac{6}{31}, \quad a_2 = \frac{40}{217}$$

$$u = \frac{x(1-x)}{217} (42 + 40x)$$

Least Square Method

- Weighting functions, Residual:

$$w_1 = \frac{\partial R}{\partial a_1} = -2 + x - x^2, \quad w_2 = \frac{\partial R}{\partial a_2} = 2 - 6x + x^2 - x^3$$

$$R(a_1, a_2, x) = x + (-2 + x - x^2)a_1 + (2 - 6x + x^2 - x^3)a_2$$

- Solution:

$$\int_0^1 R(a_1, a_2, x) \frac{\partial R}{\partial a_1} dx = \int_0^1 R(a_1, a_2, x) (-2 + x - x^2) dx = 0$$

$$\int_0^1 R(a_1, a_2, x) \frac{\partial R}{\partial a_2} dx = \int_0^1 R(a_1, a_2, x) (2 - 6x + x^2 - x^3) dx = 0$$

$$\begin{bmatrix} 202 & 101 \\ 707 & 1572 \end{bmatrix} \begin{Bmatrix} a_1 \\ a_2 \end{Bmatrix} = \begin{Bmatrix} 55 \\ 399 \end{Bmatrix} \quad \Rightarrow \quad a_1 = \frac{46161}{246137}, \quad a_2 = \frac{41713}{246137}$$

$$u = \frac{x(1-x)}{246137} (46161 + 41713x)$$

Galerkin Method

- Weighting functions, Residual:

$$w_1 = \Psi_1 = x(1-x), \quad w_2 = \Psi_2 = x^2(1-x)$$

$$R(a_1, a_2, x) = x + (-2 + x - x^2)a_1 + (2 - 6x + x^2 - x^3)a_2$$

- Results:

$$\int_0^1 R(a_1, a_2, x) \Psi_1 \, dx = \int_0^1 R(a_1, a_2, x) (x - x^2) \, dx = 0$$

$$\int_0^1 R(a_1, a_2, x) \Psi_2 \, dx = \int_0^1 R(a_1, a_2, x) (x^2 - x^3) \, dx = 0$$

$$\begin{bmatrix} 3/10 & 3/20 \\ 3/20 & 13/105 \end{bmatrix} \begin{Bmatrix} a_1 \\ a_2 \end{Bmatrix} = \begin{Bmatrix} 1/12 \\ 1/20 \end{Bmatrix} \quad \Rightarrow \quad a_1 = \frac{71}{369}, \quad a_2 = \frac{7}{41}$$

$$u = \frac{x(1-x)}{369} (71 + 63x)$$

Results

X	Exact	Collocation	Least Square	Galerkin
0.25	0.04401	0.04493	0.04311	0.04408
0.50	0.06975	0.07143	0.06807	0.06944
0.75	0.06006	0.06221	0.05900	0.06009

- Galerkin Method provides the most accurate solution
 - If functional exists, solutions of variational method and Galerkin method agree.
 - A kind of analytical solution (later of this material)
- Many commercial FEM codes use Galerkin method.
- In this class, Galerkin method is used.
- Least-square may provide robust solution in Navier-Stokes solvers for high Re.

Homework (1/2)

- Apply the following two method is the next page to the same equations:
 - Method of Moment
 - Sub-Domain Method
 - Results at $x=0.25, 0.50, 0.75$
- Compare the results of “collocation method” on “non-collocaion points” with exact solution
 - Explain the behavior
 - Try different collocation points

Homework (2/2)

- Method of Moment (モーメント法)

$$w_i = \mathbf{x}^{i-1} \quad (i \geq 1)$$

– Weighting functions ?

- Sub-Domain Method (部分領域法)

– Domain V is divided into subdomains $V_i (i=1-n)$, and weighting functions w_i are given as follows:

$$w_i = \begin{cases} 1 & \text{for points in } V_i \\ 0 & \text{for points out of } V_i \end{cases}$$

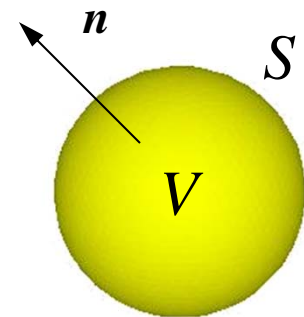
– Two unknowns, two sub domains

- Numerical Method for PDE (Method of Weighted Residual)
- Gauss-Green's Theorem
- Numerical Method for PDE (Variational Method)

Gauss's Theorem

$$\int_V \left(\frac{\partial U}{\partial x} + \frac{\partial V}{\partial y} + \frac{\partial W}{\partial z} \right) dV = \int_S (Un_x + Vn_y + Wn_z) dS$$

- 3D (x,y,z)
- Domain V surrounded by smooth closed surface S
- 3 continuous functions defined in V :
 - $U(x,y,z), V(x,y,z), W(x,y,z)$
- Outward normal vector \mathbf{n} on surface S :
 - n_x, n_y, n_z : direction cosine

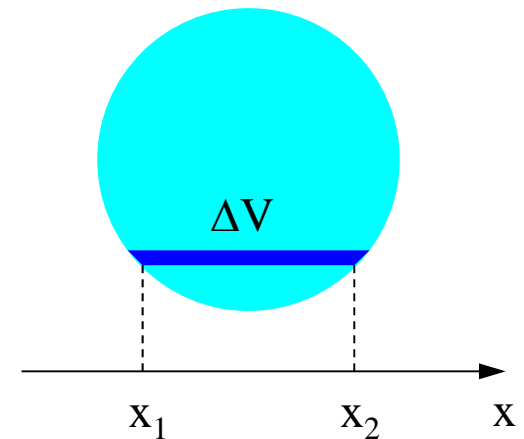
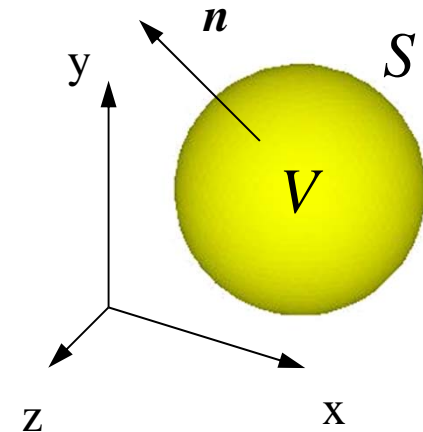


Proof of Gauss's Theorem (1/3)

- Infinitesimal prism which is parallel with x-axis:

$$\int_{\Delta V} \frac{\partial U}{\partial x} dV = \iint dy dz \int_{x_1}^{x_2} \frac{\partial U}{\partial x} dx$$

$$= \iint U(x_2, y, z) dy dz - \iint U(x_1, y, z) dy dz$$



Proof of Gauss's Theorem (2/3)

- Infinitesimal surface dS :

$$dy \, dz = +n_x \, dS \quad (\text{if } n_x \geq 0)$$

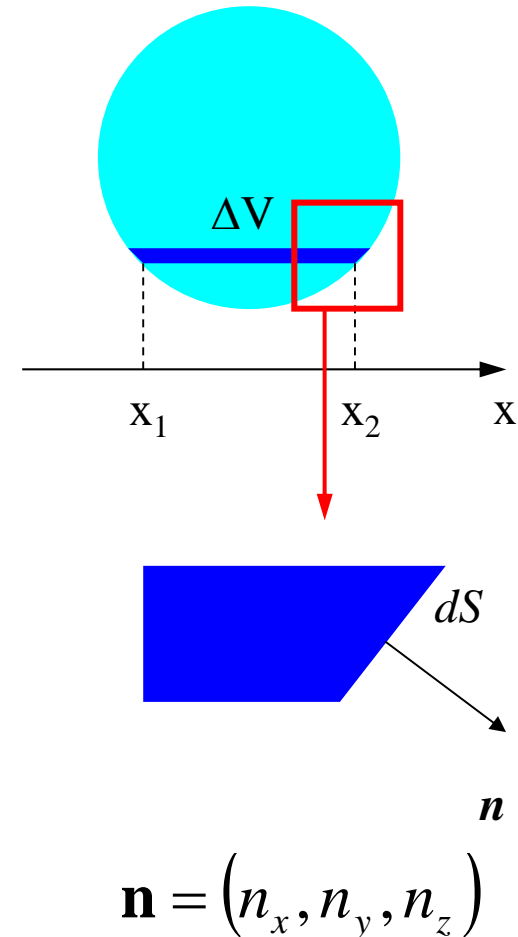
$$dy \, dz = -n_x \, dS \quad (\text{if } n_x \leq 0)$$

- thus:

$$\int_{\Delta V} \frac{\partial U}{\partial x} dV = \iint dy \, dz \int_{x_1}^{x_2} \frac{\partial U}{\partial x} dx$$

$$= \iint U(x_2, y, z) dy \, dz - \iint U(x_1, y, z) dy \, dz$$

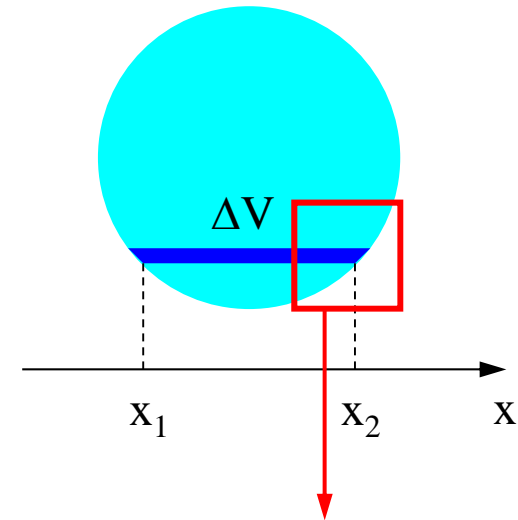
$$= \int_{\Delta S_1} U n_x dS + \int_{\Delta S_2} U n_x dS$$



Proof of Gauss's Theorem (3/3)

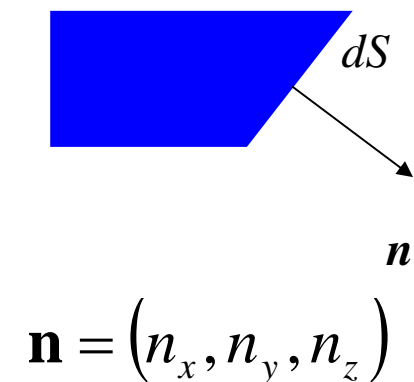
- Integration over the entire surface:

$$\int_V \frac{\partial U}{\partial x} dV = \int_S U n_x dS$$



- Extension to y-, and z- direction:

$$\int_V \left(\frac{\partial U}{\partial x} + \frac{\partial V}{\partial y} + \frac{\partial W}{\partial z} \right) dV = \int_S (U n_x + V n_y + W n_z) dS$$



Green's Theorem (1/2)

- Assume the following functions:

$$U = A \frac{\partial B}{\partial x}, \quad V = A \frac{\partial B}{\partial y}, \quad W = A \frac{\partial B}{\partial z}$$

- Thus :

$$\frac{\partial U}{\partial x} + \frac{\partial V}{\partial y} + \frac{\partial W}{\partial z} = A \left(\frac{\partial^2 B}{\partial x^2} + \frac{\partial^2 B}{\partial y^2} + \frac{\partial^2 B}{\partial z^2} \right) + \left(\frac{\partial A}{\partial x} \frac{\partial B}{\partial x} + \frac{\partial A}{\partial y} \frac{\partial B}{\partial y} + \frac{\partial A}{\partial z} \frac{\partial B}{\partial z} \right)$$

- Apply Gauss's theorem:

$$\begin{aligned} & \int_V A \left(\frac{\partial^2 B}{\partial x^2} + \frac{\partial^2 B}{\partial y^2} + \frac{\partial^2 B}{\partial z^2} \right) dV + \int_V \left(\frac{\partial A}{\partial x} \frac{\partial B}{\partial x} + \frac{\partial A}{\partial y} \frac{\partial B}{\partial y} + \frac{\partial A}{\partial z} \frac{\partial B}{\partial z} \right) dV \\ &= \int_S (U n_x + V n_y + W n_z) dS = \int_S A \left(\frac{\partial B}{\partial x} n_x + \frac{\partial B}{\partial y} n_y + \frac{\partial B}{\partial z} n_z \right) dS \end{aligned}$$

Green's Theorem (2/2)

- (cont.)

$$\int_S A \left(\frac{\partial B}{\partial x} n_x + \frac{\partial B}{\partial y} n_y + \frac{\partial B}{\partial z} n_z \right) dS = \int_S A \left(\frac{\partial B}{\partial x} \frac{\partial x}{\partial n} + \frac{\partial B}{\partial y} \frac{\partial y}{\partial n} + \frac{\partial B}{\partial z} \frac{\partial z}{\partial n} \right) dS$$

$$= \int_S A \frac{\partial B}{\partial n} dS \quad \frac{\partial B}{\partial n} \text{ Gradient of } B \text{ to the direction of normal vector}$$

- Finally:

$$\int_V A \left(\frac{\partial^2 B}{\partial x^2} + \frac{\partial^2 B}{\partial y^2} + \frac{\partial^2 B}{\partial z^2} \right) dV = \int_S A \frac{\partial B}{\partial n} dS - \int_V \left(\frac{\partial A}{\partial x} \frac{\partial B}{\partial x} + \frac{\partial A}{\partial y} \frac{\partial B}{\partial y} + \frac{\partial A}{\partial z} \frac{\partial B}{\partial z} \right) dV$$

- Appears often after next week
 - From 2nd order differentiation to 1st order differentiation.

In Vector Form

- Gauss's Theorem

$$\int_V \nabla \cdot \mathbf{w} \, dV = \int_S \mathbf{w}^T \mathbf{n} \, dS$$

- Green's Theorem

$$\int_V v \Delta u \, dV = \int_S (v \nabla u)^T \mathbf{n} \, dS - \int_V (\nabla^T v)(\nabla u) \, dV$$

- Numerical Method for PDE (Method of Weighted Residual)
- Gauss-Green's Theorem
- Numerical Method for PDE (Variational Method)

Variational Method (Ritz) (1/2)

変分法

- It is widely known that exact solution u provides extreme values (max/min) of “functional : 汎関数” $I(u)$
 - Euler equation: differential equation satisfied by u , if functional has extreme values (極値)
 - Euler equation is satisfied, if u provides extreme values of $I(u)$.
 - *provide extreme values* : 停留させる (or *stationarize*)
- For example, functional, which corresponds to governing equations of linear elasticity (principle of virtual work, equilibrium equations), is “principle of minimum potential energy (principle of minimum strain energy) (エネルギー最小, 歪みエネルギー最小) ”.

Variational Method (Ritz) (2/2)

变分法

- Substitute the following approx. solution into $I(u)$, and calculate coefficients a_i under the condition where $I_M = I(u_M)$ provides extreme values, then u_M is obtained:

$$u_M = \sum_{i=1}^M a_i \Psi_i$$

- Variational method is theoretical method, and can be only applied to differential equations, which has equivalent variational problem.
 - In this class, we mainly use MWR
 - Brief overview of Ritz method will given later today.

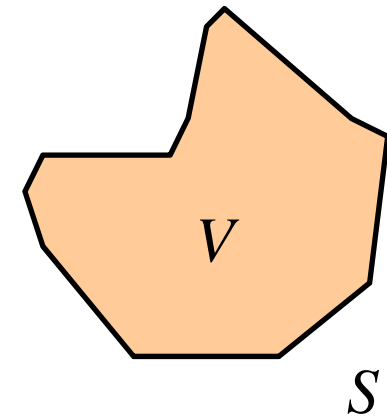
Application of Variational Method (1/5)

- Consider the following integration $I(u)$ in 2D-domain V , where $u(x,y)$ is unknown function of x and y :

$$I(u) = \int_V \frac{1}{2} \left\{ \left(\frac{\partial u}{\partial x} \right)^2 + \left(\frac{\partial u}{\partial y} \right)^2 - 2Qu \right\} dV$$

Q : known value

$u = 0$ at boundary S



- $I(u)$ is “functional (汎関数)” of function u
- u^* is a twice continuously differentiable function and minimizes $I(u)$. η is an arbitrary function which satisfies $\eta=0$ at boundary S , and α is a parameter. Consider the following equation:

$$u(x, y) = u^*(x, y) + \alpha \cdot \eta(x, y)$$

Application of Variational Method (2/5)

- At this stage, the following condition is necessary:

$$I(u) \geq I(u^*)$$

- Assume that functional $I(u^* + \alpha\eta)$ is a function of α . Functional I provides minimum value, if $\alpha=0$. Therefore, the following equation is obtained:

$$\left. \frac{\partial}{\partial \alpha} I(u^* + \alpha \cdot \eta) \right|_{\alpha=0} = 0$$

- According to the definition of functional $I(u)$, following equation is obtained

$$\int_V \left(\frac{\partial u^*}{\partial x} \frac{\partial \eta}{\partial x} + \frac{\partial u^*}{\partial y} \frac{\partial \eta}{\partial y} - Q\eta \right) dV = 0$$

$$I(u) = \int_V \frac{1}{2} \left\{ \left(\frac{\partial u}{\partial x} \right)^2 + \left(\frac{\partial u}{\partial y} \right)^2 - 2Qu \right\} dV$$

$$u(x, y) = u^*(x, y) + \alpha \cdot \eta(x, y)$$

$$\left. \frac{\partial}{\partial \alpha} I(u^* + \alpha \cdot \eta) \right|_{\alpha=0} = 0$$

$$\frac{\partial}{\partial \alpha} \left\{ \frac{1}{2} \left(\frac{\partial u}{\partial x} \right)^2 \right\} = \frac{\partial u}{\partial x} \cdot \frac{\partial}{\partial \alpha} \left(\frac{\partial u}{\partial x} \right), \quad \frac{\partial u}{\partial x} = \frac{\partial (u^* + \alpha \cdot \eta)}{\partial x} = \frac{\partial u^*}{\partial x} + \alpha \frac{\partial \eta}{\partial x}$$

$$\frac{\partial}{\partial \alpha} \left(\frac{\partial u}{\partial x} \right) = \frac{\partial \eta}{\partial x}, \quad \alpha = 0 \Rightarrow \frac{\partial}{\partial \alpha} \left\{ \frac{1}{2} \left(\frac{\partial u}{\partial x} \right)^2 \right\} = \frac{\partial u^*}{\partial x} \frac{\partial \eta}{\partial x}, \quad \frac{\partial}{\partial \alpha} \left\{ \frac{1}{2} \left(\frac{\partial u}{\partial y} \right)^2 \right\} = \frac{\partial u^*}{\partial y} \frac{\partial \eta}{\partial y}$$

$$\frac{\partial}{\partial \alpha} (Qu) = Q \frac{\partial (u^* + \alpha \cdot \eta)}{\partial \alpha} = Q\eta$$

$$\int_V \left(\frac{\partial u^*}{\partial x} \frac{\partial \eta}{\partial x} + \frac{\partial u^*}{\partial y} \frac{\partial \eta}{\partial y} - Q\eta \right) dV = 0$$

Application of Variational Method (3/5)

- Apply Green's theorem on 1st and 2nd term of LHS, and apply integration by parts, then following equation is obtained: ($A=\eta$, $B=u^*$) (see next page) :

$$-\int_V \left(\frac{\partial^2 u^*}{\partial x^2} + \frac{\partial^2 u^*}{\partial y^2} + Q \right) \eta \, dV + \int_S \eta \frac{\partial u^*}{\partial n} \, dS = 0$$

where $\frac{\partial u^*}{\partial n} = \frac{\partial u^*}{\partial x} n_x + \frac{\partial u^*}{\partial y} n_y$ Gradient of u^* in the direction of normal vector

- At boundary S , $\eta=0$:

$$-\int_V \left(\frac{\partial^2 u^*}{\partial x^2} + \frac{\partial^2 u^*}{\partial y^2} + Q \right) \eta \, dV = 0$$

- (A) is required, if the above is true for arbitrary η

$$\frac{\partial^2 u^*}{\partial x^2} + \frac{\partial^2 u^*}{\partial y^2} + Q = 0 \quad (A)$$

Green's Theorem

- $(A=\eta, B=u^*)$:

$$\int_V \left(\frac{\partial u^*}{\partial x} \frac{\partial \eta}{\partial x} + \frac{\partial u^*}{\partial y} \frac{\partial \eta}{\partial y} - Q\eta \right) dV = 0$$

$$\int_V \eta \left(\frac{\partial^2 u^*}{\partial x^2} + \frac{\partial^2 u^*}{\partial y^2} \right) dV = \int_S \eta \frac{\partial u^*}{\partial n} dS - \int_V \left(\frac{\partial \eta}{\partial x} \frac{\partial u^*}{\partial x} + \frac{\partial \eta}{\partial y} \frac{\partial u^*}{\partial y} \right) dV$$

$$\int_V \left(\frac{\partial \eta}{\partial x} \frac{\partial u^*}{\partial x} + \frac{\partial \eta}{\partial y} \frac{\partial u^*}{\partial y} \right) dV = - \int_V \eta \left(\frac{\partial^2 u^*}{\partial x^2} + \frac{\partial^2 u^*}{\partial y^2} \right) dV + \int_S \eta \frac{\partial u^*}{\partial n} dS$$

Application of Variational Method (4/5)

- Equation (A) is called “Euler equation”
 - Necessary condition of u^* , which minimizes functional $I(u)$, is that u^* satisfies the Euler equation.
- Sufficient condition:
 - Assume that u^* is solution of the Euler equation and $\alpha\eta=\delta u^*$

$$I(u^* + \delta u^*) - I(u^*) =$$

$$\underbrace{- \int_V \left(\frac{\partial^2 u^*}{\partial x^2} + \frac{\partial^2 u^*}{\partial y^2} + Q \right) \delta u^* dV}_{\delta I = 0} + \underbrace{\int_V \frac{1}{2} \left\{ \left(\frac{\partial(\delta u^*)}{\partial x} \right)^2 + \left(\frac{\partial(\delta u^*)}{\partial y} \right)^2 \right\} dV}_{\delta I^2 \geq 0}$$

$$\delta I = 0$$

First Variation

第一変分

$$\delta I^2 \geq 0$$

Second Variation

第二変分

Application of Variational Method (5/5)

- It has been proved that u^* (solution of Euler equation) minimizes functional $I(u)$.

$$I(u^* + \delta u^*) \geq I(u^*)$$

- Therefore, boundary value problem by Euler equation (A) with B.C. ($u=0$) is equivalent to variational problem.
 - Solving equivalent variational problem provides solution of Euler equation (Poisson equation in this case)
 - Functional must exist !

Approx. by Variational Method (1/4)

- Functional

$$I(u) = \int_0^1 \left\{ \frac{1}{2} \left(\frac{du}{dx} \right)^2 - \frac{1}{2} u^2 - xu \right\} dx$$

- Boundary Condition

$$u = 0 @ x = 0$$

$$u = 0 @ x = 1$$

- Obtain u , which “stationalizes” functional $I(u)$ under this B.C.

– Corresponding Euler equation is as follows (same as equation in p.15):

$$\frac{d^2 u}{dx^2} + u + x = 0 \quad (0 \leq x \leq 1)$$

(B-1)

Approx. by Variational Method (2/4)

- Assume the following test function with n -th order for function u , which is twice continuously differentiable:

$$u_n = x \cdot (1 - x) \cdot (a_1 + a_2 x + a_3 x^2 + \cdots + a_n x^{n-1}) \quad (\text{B-2})$$

- If we increase the order of test function, u_n is closer to exact solution u . Therefore, functional $I(u)$ can be approximated by $I(u_n)$:
 - If $I(u_n)$ stationarizes, $I(u)$ also stationarizes.
- We need to obtain set of unknown coefficients a_k , which satisfies the following stationary condition:

$$\frac{\partial I(u_n)}{\partial a_k} = 0 \quad (k = 1 \sim n) \quad (\text{B-3})$$

Ritz Method

- Equation (B-3) is linear equations for a_1-a_n .
- If this solutions is applied to equation (B-2), approximate solution, which satisfies Euler equation (B-1), is obtained.
 - Approximate solution, but satisfies Euler equation strictly
(厳密解)
- This type of method using a set of coefficients a_1-a_n is called “Ritz Method”.

Approx. by Variational Method (3/4)

- Ritz Method, $n=2$

$$u_2 = x \cdot (1-x) \cdot (a_1 + a_2 x) = x \cdot (1-x) \cdot a_1 + x^2 \cdot (1-x) \cdot a_2$$

$$\begin{aligned} \frac{\partial I(u_2)}{\partial a_1} = 0 \Rightarrow & \left[\int_0^1 (1-x-x^2)(1-3x+x^2) dx \right] a_1 \\ & + \left[\int_0^1 \left\{ (1-2x)(2x-3x^2) - x^3(1-x)^2 \right\} dx \right] a_2 + \int_0^1 x^2(1-x) dx = 0 \end{aligned}$$

$$\begin{aligned} \frac{\partial I(u_2)}{\partial a_2} = 0 \Rightarrow & \left[\int_0^1 \left\{ (1-2x)(2x-3x^2) - x^3(1-x)^2 \right\} dx \right] a_1 \\ & + \left[\int_0^1 (2x-3x^2+x^3)(2x-2x^2-x^3) dx \right] a_2 + \int_0^1 x^3(1-x) dx = 0 \end{aligned}$$

Supplementation for (3/4) (1/3)

- Ritz Method, $n=2$

$$u_2 = x \cdot (1-x) \cdot (a_1 + a_2 x) = x \cdot (1-x) \cdot a_1 + x^2 \cdot (1-x) \cdot a_2$$

$$I(u) = \int_0^1 \left\{ \frac{1}{2} \left(\frac{du}{dx} \right)^2 - \frac{1}{2} u^2 - xu \right\} dx$$

$$\frac{1}{2} \left(\frac{du}{dx} \right)^2 - \frac{1}{2} u^2 - xu =$$

$$\begin{aligned} & \frac{1}{2} \left[(1-2x)a_1 + (2x-3x^2)a_2 \right]^2 - \frac{1}{2} \left[x \cdot (1-x) \cdot a_1 + x^2 \cdot (1-x) \cdot a_2 \right]^2 \\ & - \left[x^2 \cdot (1-x) \cdot a_1 + x^3 \cdot (1-x) \cdot a_2 \right] \end{aligned}$$

Supplementation for (3/4) (2/3)

$$\frac{1}{2} \left(\frac{du}{dx} \right)^2 - \frac{1}{2} u^2 - xu =$$

$$\begin{aligned} & \frac{1}{2} \left[(1-2x)a_1 + (2x-3x^2)a_2 \right]^2 - \frac{1}{2} \left[x \cdot (1-x) \cdot a_1 + x^2 \cdot (1-x) \cdot a_2 \right]^2 \\ & - \left[x^2 \cdot (1-x) \cdot a_1 + x^3 \cdot (1-x) \cdot a_2 \right] \end{aligned}$$

$$\frac{\partial I(u_2)}{\partial a_1} = 0 \Rightarrow$$

$$\begin{aligned} & \left[\int_0^1 \left\{ (1-2x)^2 - x^2 \cdot (1-x)^2 \right\} dx \right] a_1 \\ & + \left[\int_0^1 \left\{ (1-2x)(2x-3x^2) - x^3 \cdot (1-x)^2 \right\} dx \right] a_2 - \int_0^1 x^2 \cdot (1-x) dx = 0 \end{aligned}$$

Supplementation for (3/4) (3/3)

$$\frac{1}{2} \left(\frac{du}{dx} \right)^2 - \frac{1}{2} u^2 - xu =$$

$$\frac{1}{2} \left[(1-2x)a_1 + (2x-3x^2)a_2 \right]^2 - \frac{1}{2} \left[x \cdot (1-x) \cdot a_1 + x^2 \cdot (1-x) \cdot a_2 \right]^2$$

$$- \left[x^2 \cdot (1-x) \cdot a_1 + x^3 \cdot (1-x) \cdot a_2 \right]$$

$$\frac{\partial I(u_2)}{\partial a_2} = 0 \Rightarrow$$

$$\left[\int_0^1 \left\{ (1-2x)(2x-3x^2) - x^3 \cdot (1-x)^2 \right\} dx \right] a_1$$

$$+ \left[\int_0^1 \left\{ (2-3x^2)^2 - x^4 \cdot (1-x)^2 \right\} dx \right] a_2 - \int_0^1 x^3 \cdot (1-x) dx = 0$$

Approx. by Variational Method (4/4)

- Final linear equations are as follows:

$$\begin{bmatrix} 3/10 & 3/20 \\ 3/20 & 13/105 \end{bmatrix} \begin{Bmatrix} a_1 \\ a_2 \end{Bmatrix} = \begin{Bmatrix} 1/12 \\ 1/20 \end{Bmatrix} \quad \Rightarrow \quad a_1 = \frac{71}{369}, \quad a_2 = \frac{7}{41}$$

$$u = \frac{x(1-x)}{369} (71 + 63x)$$

- This result is identical with that of Galerkin Method
– NOT a coincidence !!

Galerkin Method

- Weighting functions (which satisfy $u=0$ @ $x=0,1$),
Residual:

$$w_1 = \Psi_1 = x(1-x), \quad w_2 = \Psi_2 = x^2(1-x)$$

$$R(a_1, a_2, x) = x + (-2 + x - x^2)a_1 + (2 - 6x + x^2 - x^3)a_2$$

- Results:

$$\int_0^1 R(a_1, a_2, x) \Psi_1 dx = \int_0^1 R(a_1, a_2, x) (x - x^2) dx = 0$$

$$\int_0^1 R(a_1, a_2, x) \Psi_2 dx = \int_0^1 R(a_1, a_2, x) (x^2 - x^3) dx = 0$$

$$\begin{bmatrix} 3/10 & 3/20 \\ 3/20 & 13/105 \end{bmatrix} \begin{Bmatrix} a_1 \\ a_2 \end{Bmatrix} = \begin{Bmatrix} 1/12 \\ 1/20 \end{Bmatrix} \quad \Rightarrow \quad a_1 = \frac{71}{369}, \quad a_2 = \frac{7}{41}$$

$$u = \frac{x(1-x)}{369} (71 + 63x)$$

Ritz Method & Galerkin Method (1/4)

$$u_2 = x \cdot (1 - x) \cdot (a_1 + a_2 x) = a_1 w_1 + a_2 w_2$$

$$I(u) = \int_0^1 \left\{ \frac{1}{2} \left(\frac{du}{dx} \right)^2 - \frac{1}{2} u^2 - xu \right\} dx$$

$$\frac{\partial}{\partial a_1} \left[\frac{1}{2} \left(\frac{du_2}{dx} \right)^2 \right] = \frac{du_2}{dx} \cdot \frac{\partial}{\partial a_1} \left(\frac{du_2}{dx} \right) = \left(a_1 \frac{dw_1}{dx} + a_2 \frac{dw_2}{dx} \right) \frac{dw_1}{dx}$$

$$\frac{\partial}{\partial a_1} \left[\frac{1}{2} u_2^2 \right] = \underbrace{u_2}_{\text{red circle}} \cdot \frac{\partial u_2}{\partial a_1} = (a_1 w_1 + a_2 w_2) \cdot w_1$$

$$\frac{\partial}{\partial a_1} [xu_2] = x \cdot \frac{\partial u_2}{\partial a_1} = x \cdot w_1$$

$$\frac{\partial I(u_2)}{\partial a_1} = 0 \Rightarrow$$

$$\left[\int_0^1 \left\{ \left(\frac{dw_1}{dx} \right)^2 a_1 + \frac{dw_1}{dx} \frac{dw_2}{dx} a_2 \right\} dx \right] - \left[\int_0^1 w_1 \{ (w_1 a_1 + w_2 a_2) + x \} dx \right] = 0$$

$$\frac{\partial I(u_2)}{\partial a_2} = 0 \Rightarrow$$

$$\left[\int_0^1 \left\{ \frac{dw_1}{dx} \frac{dw_2}{dx} a_1 + \left(\frac{dw_2}{dx} \right)^2 a_2 \right\} dx \right] - \left[\int_0^1 w_2 \{ (w_1 a_1 + w_2 a_2) + x \} dx \right] = 0$$

Ritz Method & Galerkin Method (2/4)

$$\frac{\partial I(u_2)}{\partial a_1} = 0 \Rightarrow$$

$$\left[\int_0^1 \left\{ \left(\frac{dw_1}{dx} \right)^2 a_1 + \frac{dw_1}{dx} \frac{dw_2}{dx} a_2 \right\} dx \right] - \left[\int_0^1 w_1 \{ (w_1 a_1 + w_2 a_2) + x \} dx \right] = 0$$

$$w_1 = \Psi_1 = x(1-x),$$

$$w_2 = \Psi_2 = x^2(1-x)$$

$$\frac{\partial}{\partial x} \left(w_1 \frac{dw_1}{dx} \right) = \frac{dw_1}{dx} \frac{dw_1}{dx} + w_1 \frac{d^2 w_1}{dx^2}$$

$$\frac{\partial}{\partial x} \left(w_1 \frac{dw_2}{dx} \right) = \frac{dw_1}{dx} \frac{dw_2}{dx} + w_1 \frac{d^2 w_2}{dx^2}$$

$$\int_0^1 \left\{ \left(\frac{dw_1}{dx} \right)^2 a_1 \right\} dx = \left(a_1 w_1 \frac{dw_1}{dx} \right) \Big|_0^1 - \int_0^1 w_1 \left\{ \frac{d^2 w_1}{dx^2} a_1 \right\} dx = - \int_0^1 w_1 \left\{ \frac{d^2 w_1}{dx^2} a_1 \right\} dx$$

$$\int_0^1 \left\{ \left(\frac{dw_1}{dx} \frac{dw_2}{dx} \right) a_2 \right\} dx = \left(a_2 w_1 \frac{dw_2}{dx} \right) \Big|_0^1 - \int_0^1 w_1 \left\{ \frac{d^2 w_2}{dx^2} a_2 \right\} dx = - \int_0^1 w_1 \left\{ \frac{d^2 w_2}{dx^2} a_2 \right\} dx$$

Ritz Method & Galerkin Method (3/4)

$$\frac{\partial I(u_2)}{\partial a_1} = 0 \Rightarrow$$

$$\frac{d^2 u}{dx^2} + u + x = 0$$

$$u = a_1 w_1 + a_2 w_2$$

$$-\int_0^1 w_1 \left\{ \left(\frac{d^2 w_1}{dx^2} a_1 + \frac{d^2 w_2}{dx^2} a_2 \right) + (w_1 a_1 + w_2 a_2) + x \right\} dx = 0$$

$$-\int_0^1 w_1 \left(\frac{d^2 u_2}{dx^2} + u_2 + x \right) dx = 0$$

Galerkin Method !!

$$\frac{\partial I(u_2)}{\partial a_2} = 0 \Rightarrow$$

$$-\int_0^1 w_2 \left\{ \left(\frac{d^2 w_1}{dx^2} a_1 + \frac{d^2 w_2}{dx^2} a_2 \right) + (w_1 a_1 + w_2 a_2) + x \right\} dx = 0$$

$$-\int_0^1 w_2 \left(\frac{d^2 u_2}{dx^2} + u_2 + x \right) dx = 0$$

Ritz Method & Galerkin Method (4/4)

- This example is a very special case. But, generally speaking, results of Galerkin method and Ritz method agree, if functional exists.
- Although Ritz method provides approx. solution, that satisfies Euler equation in strict sense. Therefore, solution of Ritz method is closer to exact solution.
 - This is the main reason that Galerkin method is accurate.
 - Please just remember this.
- This relationship between Ritz and Galerkin is not correct if functional does not exist.
 - In these cases, Galerkin method is not necessarily the best method from the viewpoint of accuracy and robustness.